



**RÉPUBLIQUE  
FRANÇAISE**

*Liberté  
Égalité  
Fraternité*



**Julien Ruaro**

**National coordinator on knowledge of the costs  
of local authorities' waste services**

**French Agency for Environment (ADEME)**

**Waste Identification and Management Service  
Circular Economy and Waste Division**

**[julien.ruaro@ademe.fr](mailto:julien.ruaro@ademe.fr) +33387200296**

# French Agency for Environment (ADEME)

ADEME is active in the implementation of public policy in the areas of the environment, energy and sustainable development.

ADEME provides expertise and advisory services to businesses, local authorities and communities, government bodies and the public at large, to enable them to establish and consolidate their environmental action.

As part of this work the agency helps finance projects, from research to implementation, in its areas of action.

# A nationally standardized framework to express the costs of local authorities' waste services

In columns, the collection services for the various waste streams:

Residuals	Glass packaging	Other packaging and paper	Waste collection centers	Possibly other streams such as separate collection of bio-waste, professionals dedicated collections...
-----------	-----------------	---------------------------	--------------------------	---

In rows, the various expenses and revenue:

- Structural costs (administrative and elected staff, premises costs...)
- Technical costs:
  - Pre-collection (that is amortisation and maintenance of containers)
  - Collection
  - Transit/transport
  - Treatment
- Revenue:
  - Resales of materials and energy
  - Contributions from initial producers (from relevant streams)
  - Subsidies

		Année 2012		Flux de déchets					
		Montant en € HT		Déchets ménagers résiduels	Verre	Recyclables secs des DM hors verre	Déchets des déchets	Déchets des professionnels	Total
		Population adhérente : 21 264 hab.							
Charges	Fonctionnelles	Charges de structure							
		Communication							
	<b>TOTAL Fonctionnelles</b>								
	Techniques	Précollecte							
		Collecte et pré-collecte							
		Pré-collecte							
		Collecte							
		Transport/Transport							
		Traitement des déchets non dangereux							
	TOTAL Charges								
Industriels		Ventes de produits et d'énergie							
		Matériaux							
		Prescriptions à des tiers							
<b>TOTAL Industriels</b>									
Produits	Subsidies	Tous autres des sociétés locales							
		Régimes des subventions d'amortissements (amortissements)							
	Aides	Subventions de fonctionnement							
		Aides à l'emploi							
<b>TOTAL Aides</b>									
<b>TOTAL Produits</b>									
Autres infos	Montant de la TVA acquittée								
	Contribution des usagers	VEOM							
<b>TOTAL Contributions</b>									

# A nationally standardized framework to express the costs of local authorities' waste services

## Requirements:

- Data from accounting
- 12 months over
- Inclusion of structural costs
- Standard periods to amortize investments
- Euro excluding taxes

# A nationally standardized framework to express the costs of local authorities' waste services

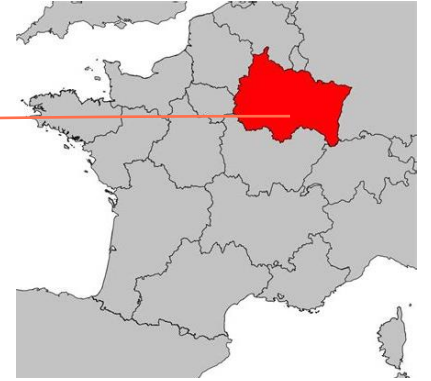
## A comprehensive system:

- Training for technicians and accountants
- Assistance to complete each year
- Database
- National and local statistics
- Data analysis workshops

# A nationally standardized framework to express the costs of local authorities' waste services

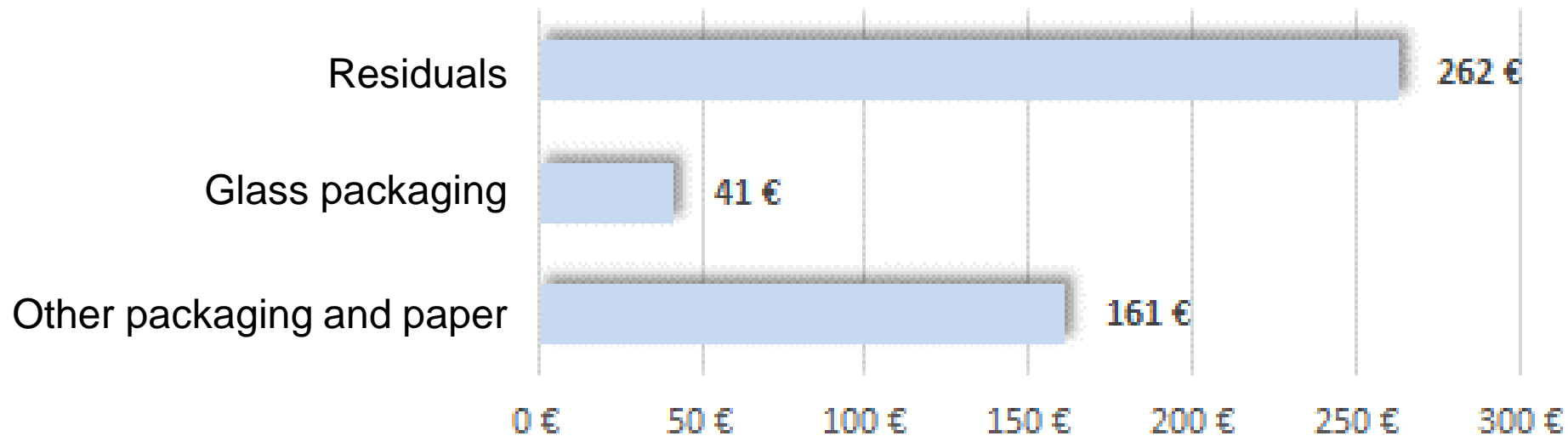
**750 local authorities out of 1300 in the dynamic**

**100 % goal !**



# Examples with Grand Est region statistics

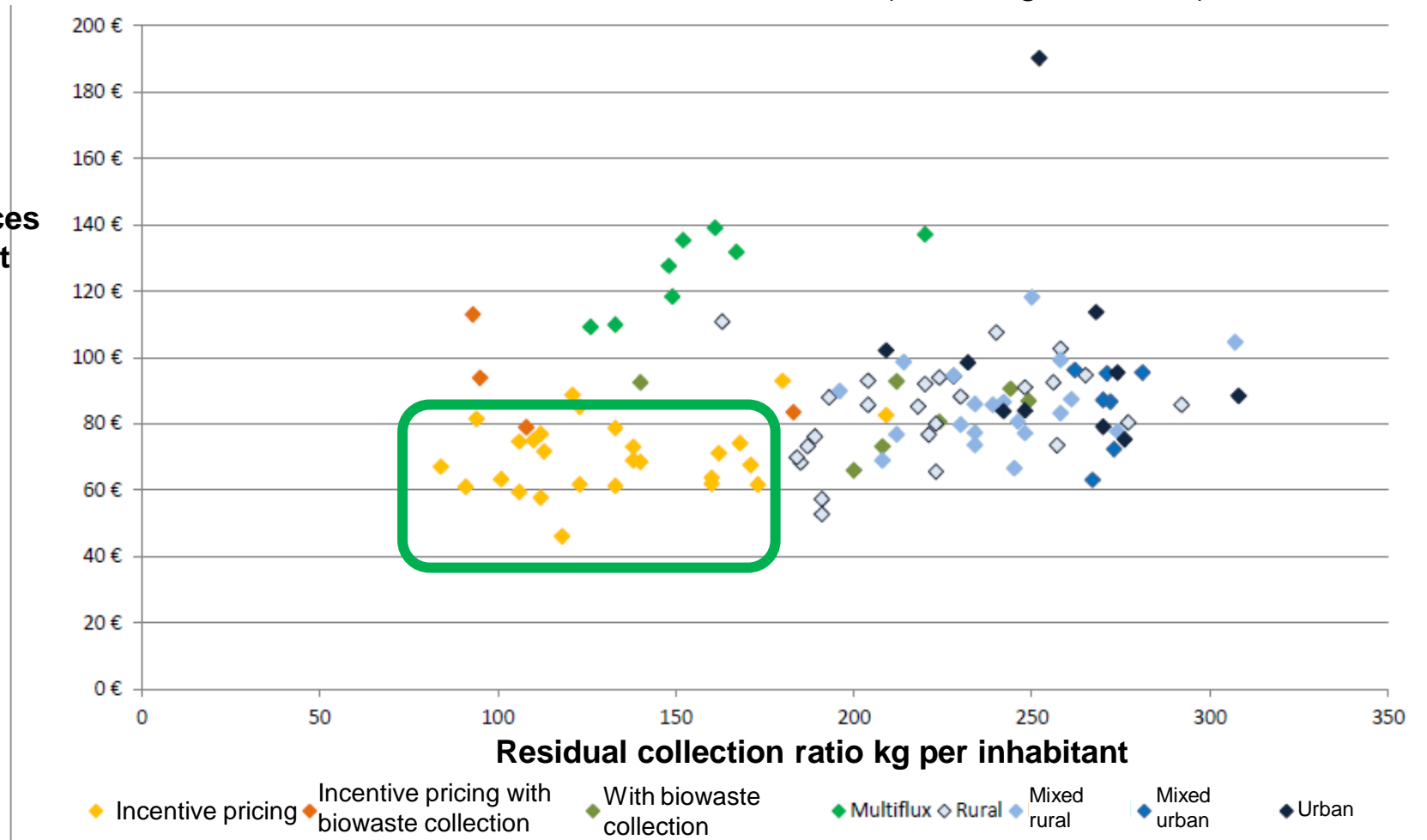
Comparison cost\* per tonne (2017 regional data)



\*Comparison cost = expenses VAT included minus revenue of resales of materials/energy, contributions from initial producers and subsidies

## All Grand Est local authorities (2017 regional data)

**Comparison cost\* for all services**  
**€ (VAT exempt) per inhabitant**



\*Comparison cost = expenses VAT included minus revenue of resales of materials/energy, contributions from initial producers and subsidies





**RÉPUBLIQUE  
FRANÇAISE**

*Liberté  
Égalité  
Fraternité*



**Julien Ruaro**

**National coordinator on knowledge of the costs of  
local authorities' waste services**

**French Agency for Environment (ADEME)**

**Waste Identification and Management Service  
Circular Economy and Waste Division**

**[julien.ruaro@ademe.fr](mailto:julien.ruaro@ademe.fr) +33387200296**