

# COLLECTORS

Final Conference  
November 17, 2020

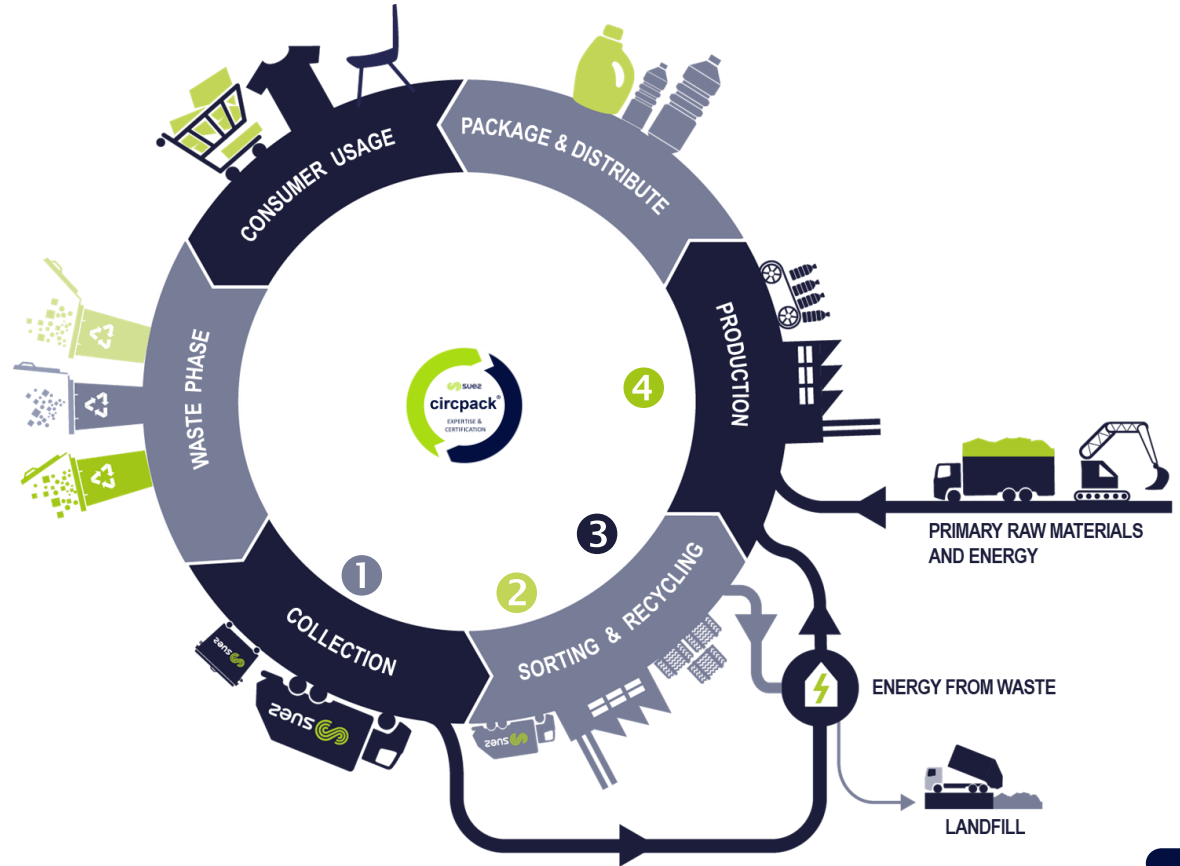
*The view of a waste collector, sorter and reprocessor on how to track&trace sorted material until their final destination*



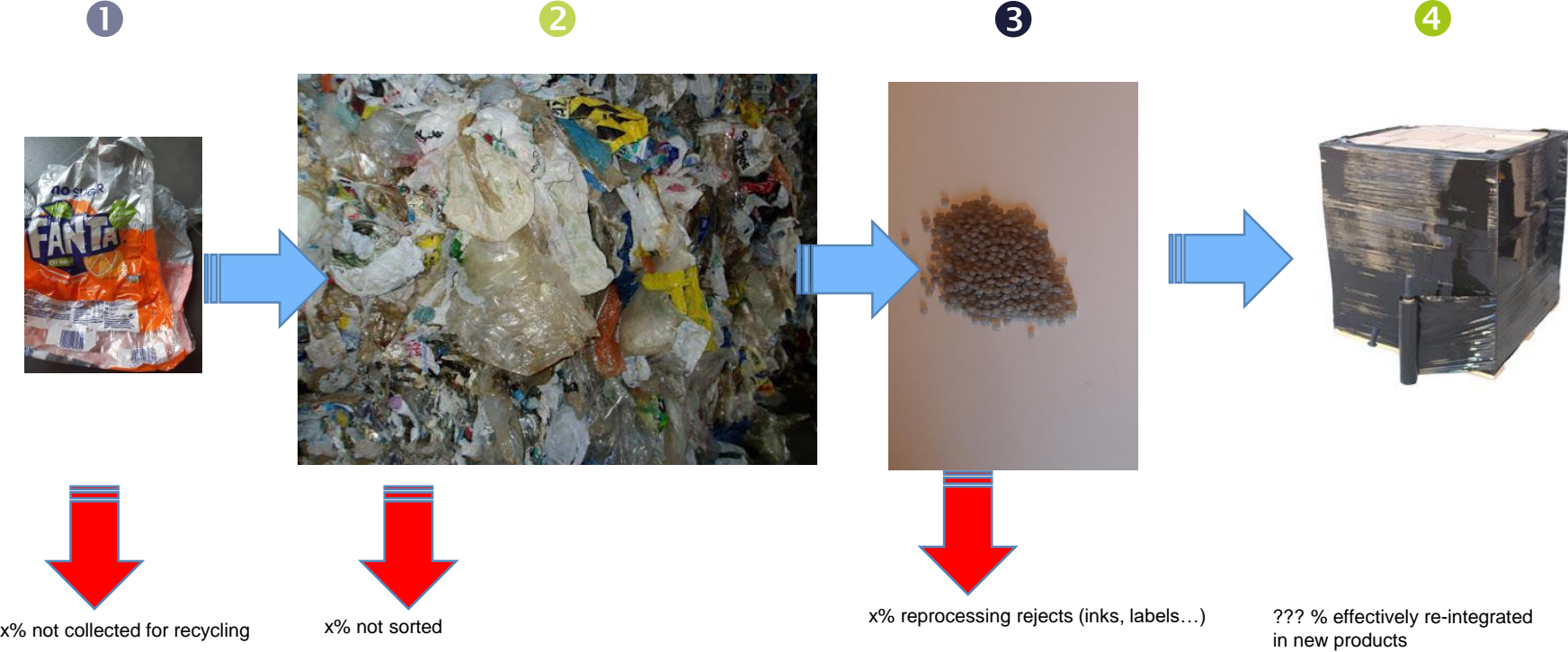
# Recyclability assessment : the example of packaging

## RECYCLABILITY

-  1 COLLECTION
-  2 SORTING
-  3 REPROCESSING
-  4 APPLICATION



# Collection – Sorting – Reprocessing - Recycled content in new products



# Track & trace from sorted waste to recycled content

RecyClass

ABOUT

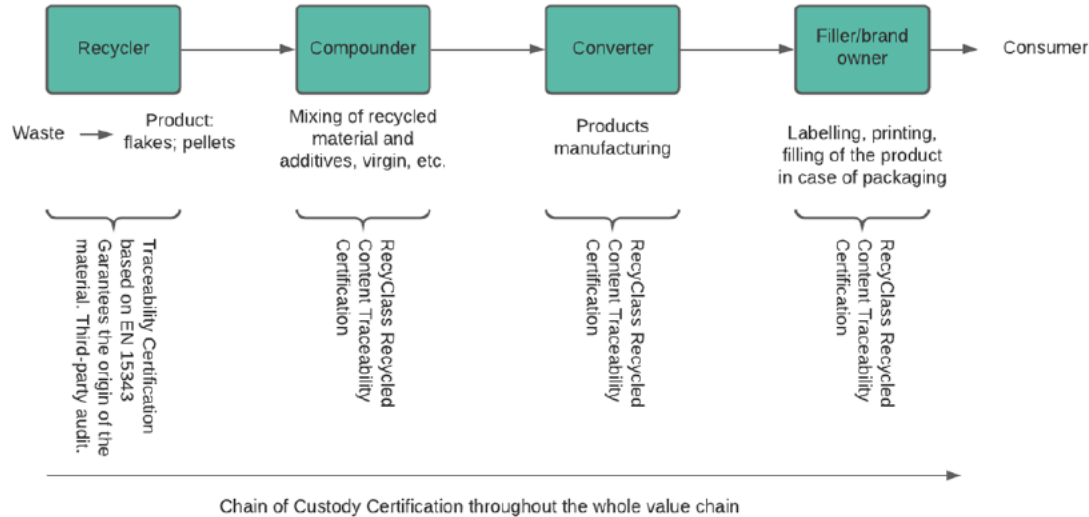
RECYCLABILITY

APPROVALS

RECYCLED CONTENT

NEWS & EVENTS

HELP & CONTACT



With the RecyClass Audit Scheme on Recycled Content Traceability companies can:

- **Reassure consumers and provide trust to end-users**, increasing public interest in recycled content.
- **Demonstrate value chain compliance with stakeholders and consumers**. Increasing regulation; address use of claims by a third-party verification.
- **Support corporate sustainability claims** about recycled content.
- **Show transparency** by providing information about the waste origin and source.

# Blockchain to better track and trace ?



EXTR:ACT (Driving Value for multimaterial recycling) has been set up by BillerudKorsnäs, Elopak, SIG Combibloc, Stora Enso and Tetra Pak

*Current investigation of SUEZ with Circularise and Extr:Act  
Where is the business driver? Which company in the value chain is ready to pay an extra cost for achieving an effective tracking of recycled content?*

*First DEFINE what you wish to monitor. For instance, « Recycled content » should not address non-waste re-used production rejects.  
Then REGULATE the monitoring, enforce the use of standard blockchain for instance.*

SUEZ Sorting 

Paper Mill 

Compounder/Blending 

« PolyAI »

Fibers Re-used

**CHRISTINE.LEVEQUE@SUEZ.COM**

**+32 473 90 76 82**

