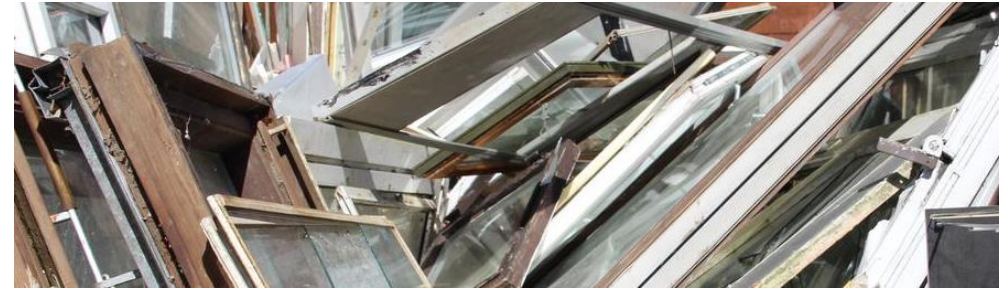


Odense Municipality



Management of Construction & Demolition Waste

Michael Dino
Hansen



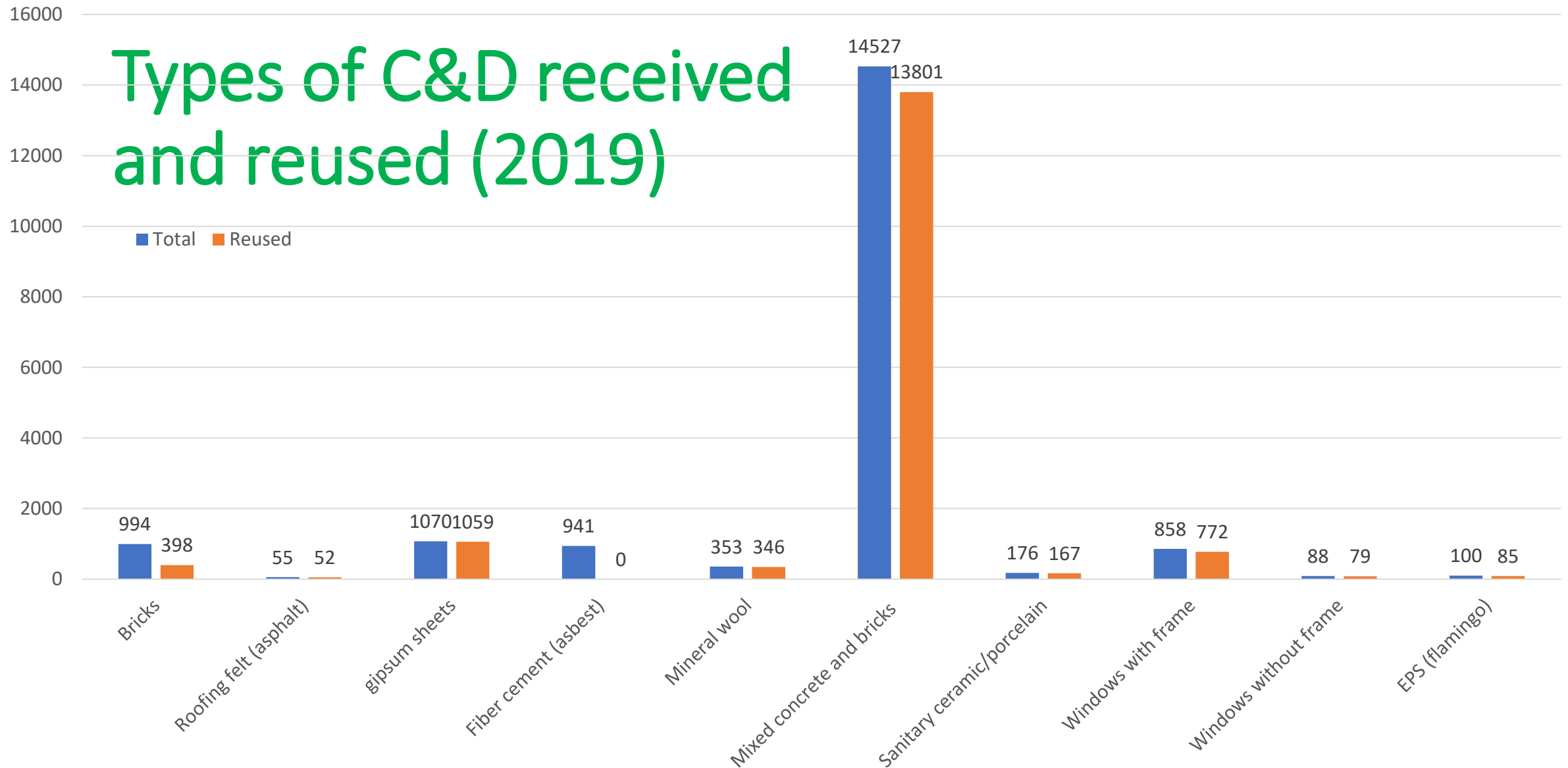
System to Manage C&D Waste

Can be delivered to 8 civic amenity sites throughout the municipality

- Households for free (included in yearly waste fee)
 - Obligated to report and screen quantities above 1 m³;
1 ton or projects above 10 m²
 - No maximum quantity
- Small businesses pay 20 Euro (incl. VAT) per visit
 - Obligated to report and screen waste
 - No maximum quantity
 - Maximum 2500 kg per visit



Types of C&D received and reused (2019)



Challenges (Private)

- The professional demolition companies have procedures and systems in place to deal with C&D waste - the problem is the private and small enterprises
- National action plan for PCB containing C&D waste published in <https://pcb-guiden.dk/file/186399/handlingsplan.pdf>
- Statutory order on PCB (2016)
- Criteria for when C&D waste is exist

NO
awareness on
hazardous
C&D waste

NO
reporting on
building
modifications

NO
compliance to
regulation

NO
focus/follow
up by
authorities



Changes to be implemented in 2021/22

C&D Waste only to be received at 2 civic amenity sites

The citizens and companies will be interviewed to screen whether the C&D could contain hazardous substances

- Build/renovated between 1950-1977 ?
 - Sampling and analysis of collected materials
 - Correct disposal of contaminated C&D waste
-
- Separation of tiles from concrete and bricks
 - Information campaign on C&D waste
- ➡ Will result in extra cost



Thank you

For further information contact

Head of Recycling Department

Mette Lilholm Lorenzen

mel@odenserenovation.dk

Michael Dino Hansen

mdh@odenserenovation.dk



Odense Waste Management headquarter and civic amenity site