

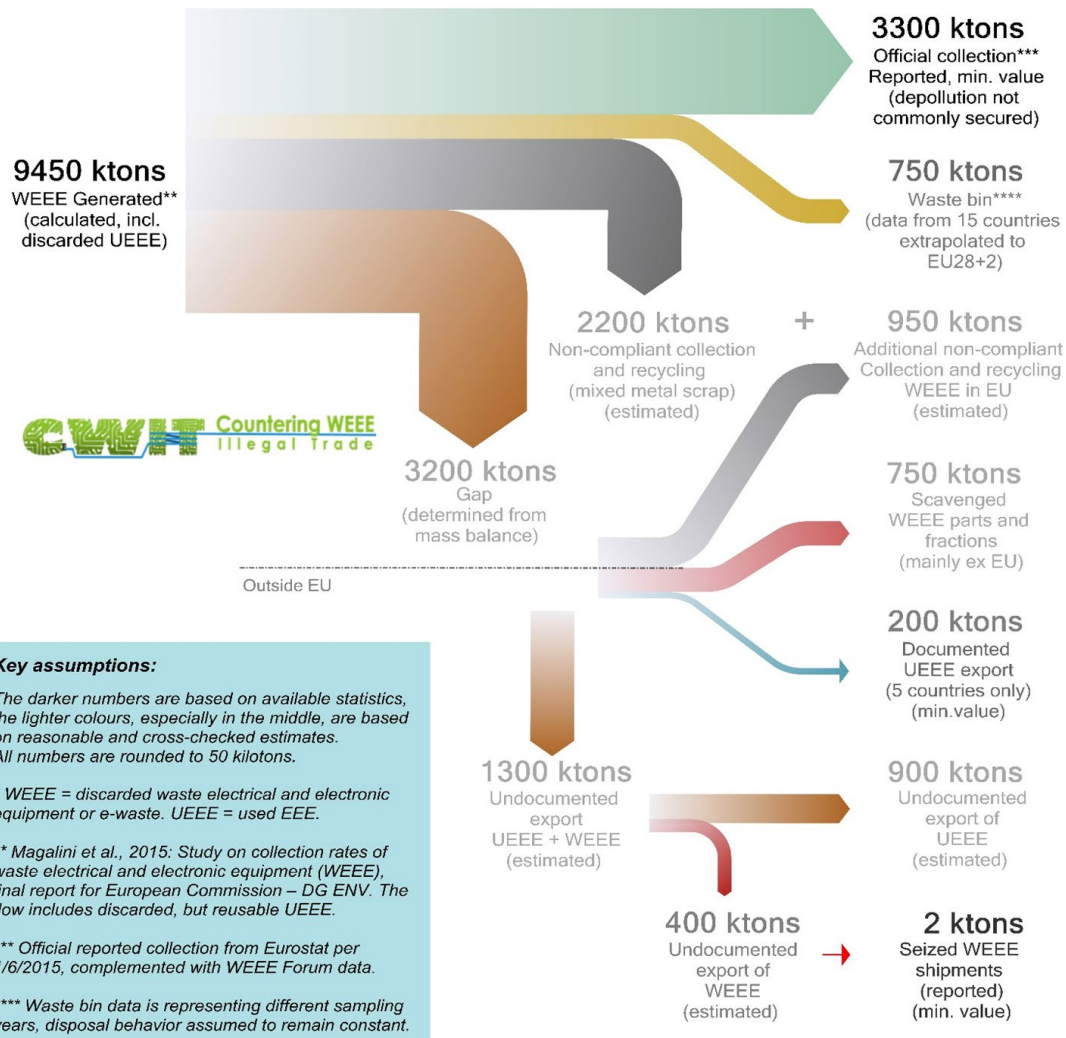
# Best practices to improve the quantity and quality of collected WEEE

Examples of COLLECTORS good practices

Virtual session (03-06-2020)

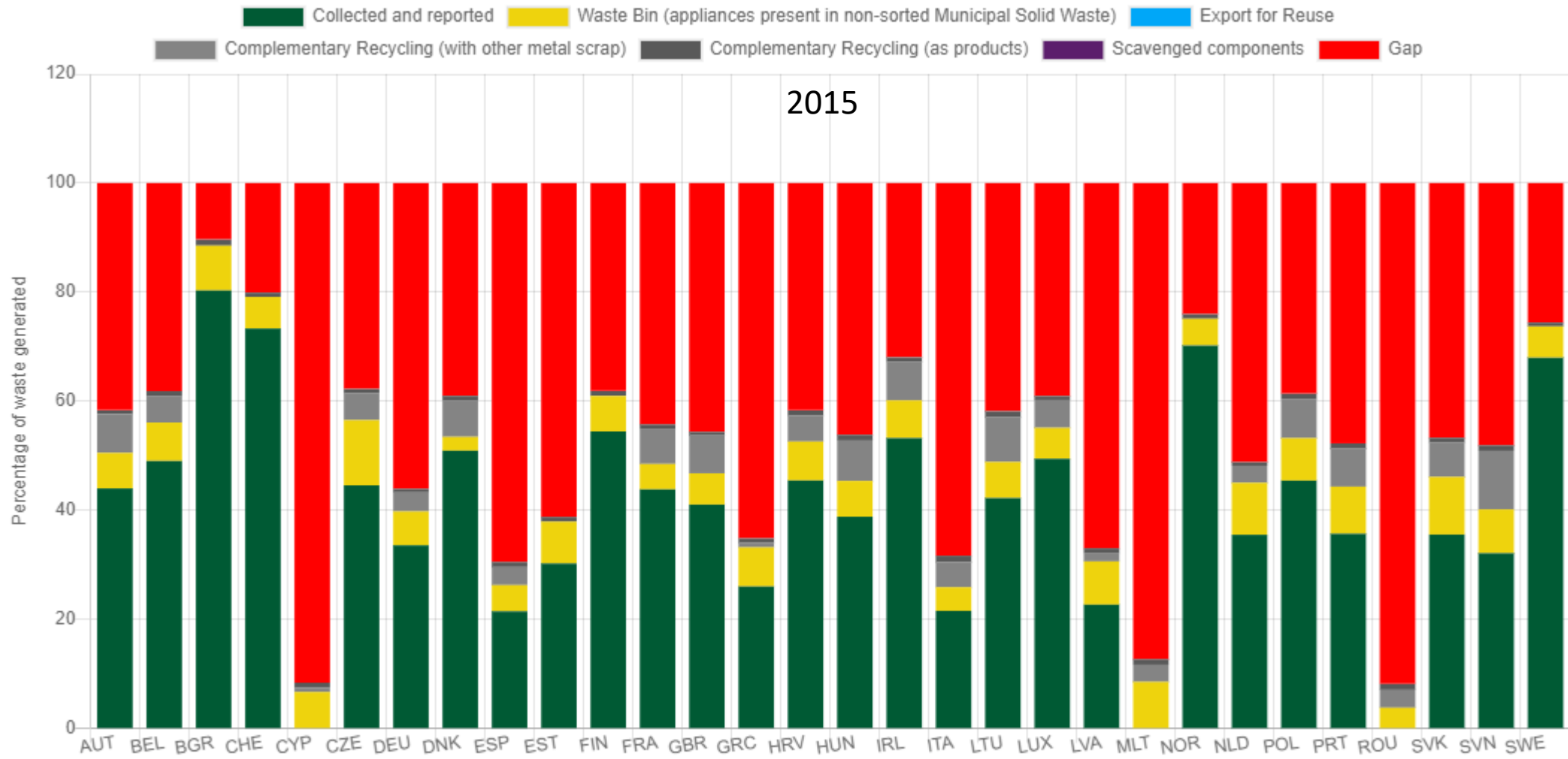
Lucía Herreras Martínez  
WEEE Forum





## The WEEE flows in EU

- Only a **share** of WEEE is currently **traced** (Collected and Treated)
- A **share** of WEEE is currently treated (in EU) but **mislabelled** (mainly metal scrap)
- A substantial **“knowledge-GAP”** is still **calling for actions** along the monitoring and enforcement chain.



# Where is the unreported WEEE?



WEEE in mixed residual waste



WEEE hoarded, passed on



WEEE Collected with scrap and WEEE scavenged



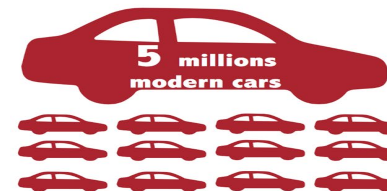
Improve quantity of WEEE collected



Exports

Some consequences:

- Loss of valuable materials
- Grey economy
- Unreported WEEE flows
- Environmental damage due to improper treatment
- Collection targets are not reached



**84,000 tonnes of fridge compressors are stolen before collection, equal to the CO<sub>2</sub> equivalent of 5 million modern passenger car on the road... Annually!**



## WEEE in mixed residual waste



## WEEE hoarded, passed on

- Run attitudinal surveys (investigate motivations for users).
- Communication campaigns for end users to raise awareness (e.g. schools, shopping malls)
- Collection points more easily accessible and more visible.
- Increase the number of collection points.
- Training at collection points
- Assess the possibility of running law enforcement campaigns for end users (tackle fly tipping and improper curbside disposal).



Improve quantity of WEEE collected



WEEE Collected with scrap and WEEE scavenged



Exports

- Improve security at collection points.
- Introduce a ban on cash transactions.
- Promote collection and reporting of separated WEEE to all actors handling WEEE
- Training at collection points (to staff and users)
- Targeted enforcement, train enforcement (inspection and customs)
- Create international WEEE networks
- Local monitoring and benchmarking (use of indicators)



Improve quantity of WEEE collected



## Improve quantity of WEEE collected

- Reporting obligations for all actors collecting WEEE.
- Proactive role for all actors having access to WEEE (e.g. municipalities, retail, scrap etc.)
- Use an unequivocal description of WEEE for reporting that allows traceability and data comparability.
- Monitor and quantify complementary flows (national monitoring campaign)
- Enhance role of reverse logistics



Coordination body



National WEEE networks



## Improve quality of WEEE collected

- Promote collection of separated WEEE streams
- Train staff at collection points
- Educate end users
- Collection and logistics guidelines and standards
- Fight against scavenging, improve collection points
- Monitor scavenging





Thank you!

[lucia.herreras@weee-forum.org](mailto:lucia.herreras@weee-forum.org)

# Additional slides

## The WEEE flows in EU: role of export

