

Paper and packaging waste

How to boost recycling rate in rural areas
Good practice from Arges county - Romania

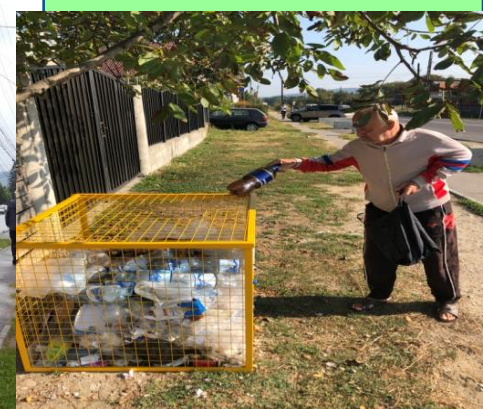
The context/initial challenge

- Separate collection is mandatory and local authorities are responsible to organize the system
- Actual results shows that participation of citizens to the system is very limited, but rural areas are the most vulnerable
- Valuable materials have been stolen from municipalities containers by informal collectors
- Recycling rate of municipal waste is low and with no perspective to be reach until 2020, 14 % recycling municipal rate at national level according EUROSTAT
- Cooperation with EPR schemes on packaging waste – new legal framework clarify the relation between local authorities and producers organizations
 - Contract ADI – EPR
 - Distinct flow for HH packaging
 - Acquisition from population is possible – collection points or at sources, but EPR cannot pay subsidy
 - Collectors are obliged to report the quantities of packaging waste to ADI



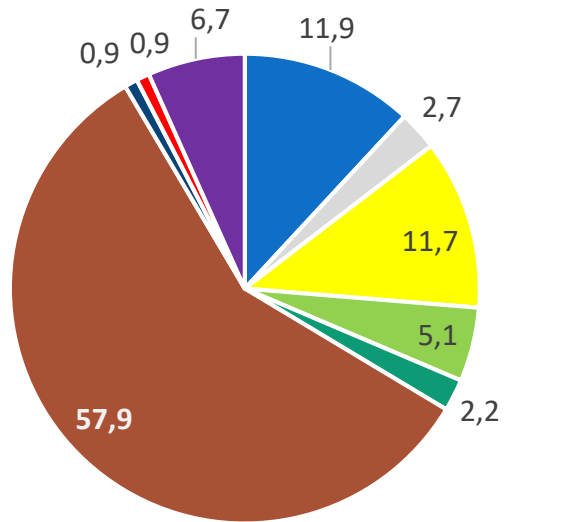
The practice in itself

- The cost of the separate collection system in rural areas is few times higher than in urban areas
- Public collection points for recyclable waste are available
- Starting second part of 2018 door to door system is applicable in rural areas
- Starting January 2019 PAYT system is implemented
- Communication campaigns (0.8 euro/ton starting 2019)
- Landfill tax – about 50 lei/ton => min. 42% waste diverted from landfill in 2019 paid by local authorities
- Circular economy contribution => 30 lei /ton for waste sent to landfill in 2019 and 80/ton starting 2020 paid by landfill owners or administrators



The results

municipal waste composition (%)



■ paper ■ metal ■ plastic ■ glass ■ wood
■ biowaste ■ textile ■ bulky ■ other

Study case – 10 villages in Arges county

Data collected: mixt waste and recyclable waste

January – May 2018 and 2019

Results:

Quantity of collected mixed waste decrease in each village (6% - 55%)

Quantity of recyclable was increased in all villages, in some cases the quantity increased 4 times

At county level diverting from landfill is 30%:

- recycling rate is 15%
- 15% from total municipal waste in send to incineration

THANK YOU!

Liliana Nichita

Director

Federation of Intercommunity Development Associations

e-mail: nichita.liliana@federatiaadi.ro