



CITY OF STAVANGER



COLLECTORS

WASTE COLLECTION SYSTEMS ASSESSED  
AND GOOD PRACTICES IDENTIFIED

# Collectors meeting

Presentation - Stavanger, Norway

Stavanger, 24.09.2018

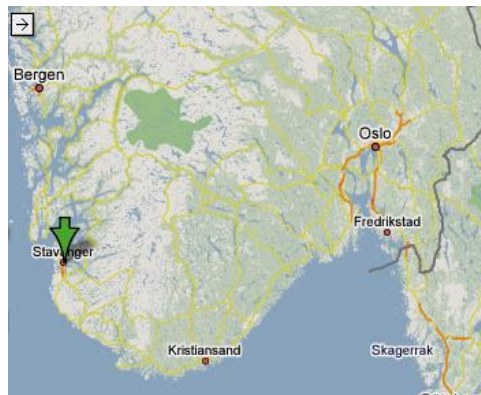
Tor Larsen,  
Municipality of Stavanger –  
Dep. of Waste Management



This project has received funding from the European Union's Horizon 2020 research and innovation program under grant agreement No 776745

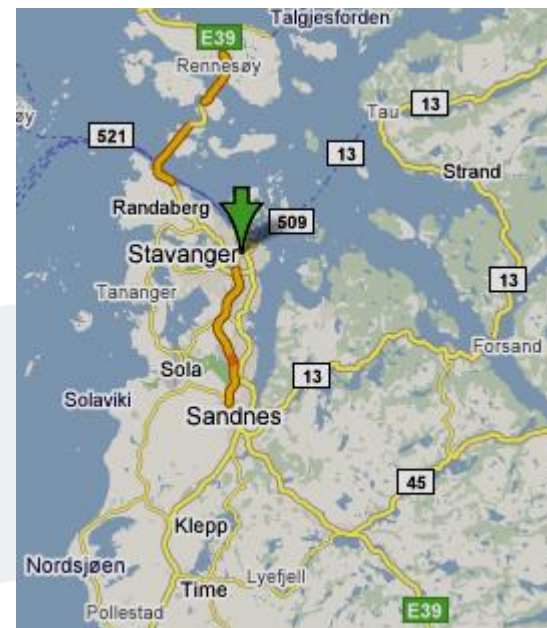


# Stavanger – short info



Stavanger: 133 000 inhabitants  
Part of region of about 350 000 inh.

Amount of household waste - 2017: 426 kg/inh  
Sorted for recycling - 2017: 65,3 %  
Target 2020: 75% minimum





# WEEE



## Status:

- 17,9 kg/inh. collected from households (Stavanger-2017)
- 1,1 kg/inh. still in residual waste 😞
- Collected from municipalities for recycling by companies approved by the Norwegian Environment Agency according to EPR (extended producer responsibility)
- System since 1999
- On national level 85% recycled into materials, 8% for energy

Households have several options:

- Free delivery to shops and others selling such products—“duty to receive”
- Free delivery to intermunicipal recycling stations
- Free pickup-service – bulky waste incl. WEEE
- Free pickup-service – hazardous waste incl. S-WEEE
- Popular second-hand markets [online](#)
- Very few cases of illegal dumping in nature

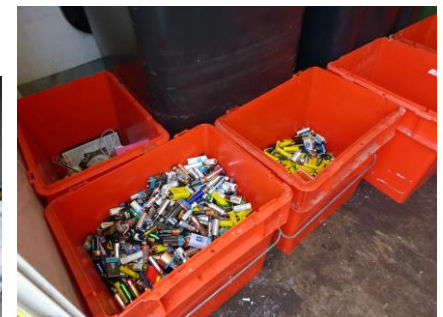




## How to boost performance:

### Pickup-service:

- Online booking
- Municipalities cooperating to streamline collection-system, costs and IT
- Free service, covered by waste-fee
- Can order both as single house/flat and as cooperative
- A very popular service 👍





# Paper and packaging



## Status:

Collected from households (Stavanger - 2017):

- 46,1 kg/inh. – all categories of paper (about 84% of total)
- 5,6 kg/inh. – plastic packaging (about 32% of total)
- 8,0 kg/inh. – glass packaging (about 71% of total)
- 2,3 kg/inh. – metal packaging (about 28% of total)
- *Note: A very effective deposit-system for plastic and metal bottles and boxes*

Paper:

- Bin system or underground containers
- Larger amounts of cardboard: Recycling station or pickup-service

Plastics:

- Recycling points, bin, sack or underground container

Glass and metal:

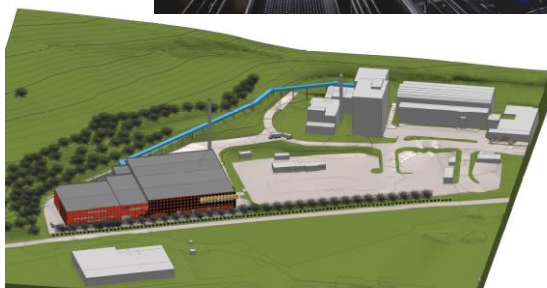
- Recycling points, bin, sack or underground cont.








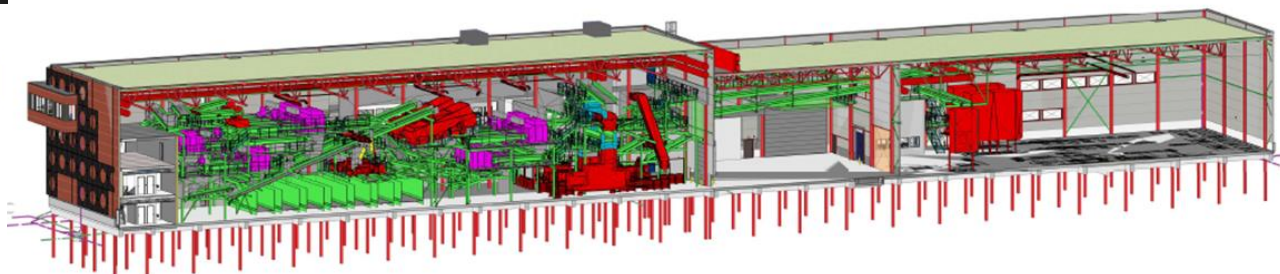
## How to boost performance:



- In general: Keep the systems of sorting at home
  - Except plastic- and metal-packaging – back in residual waste to be sorted at plant
- Decision to build a new, top-modern 11.000 m<sup>2</sup> sorting-plant for residual waste (start-up end of 2018)
- Also including sorting-line for “paper” and equipment for washing and pelleting the different categories of plastic
- Run by intermunicipal company. Municipal waste fee expected at same level or lower
- Increase level of waste sorted for recycling from 65% today to more than 75%
- Increase quality of materials for recycling
- Improve our “climate gas emission- account” from waste
- Also parts of commercial waste to be included



Waste Category	Current Recycling Rate (%)	Target Recycling Rate (%)
Paper	65	75
Plastic	65	75
Metal	65	75
Other	65	75







# CDW

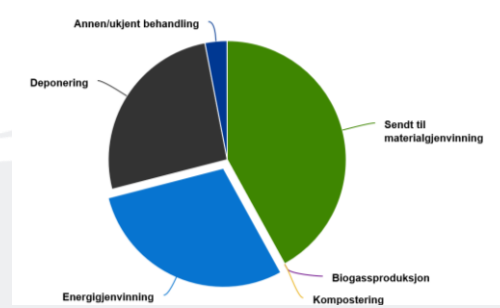
## Norway – CDW in numbers (2016):

- 1,87 mill tonnes, 66% from rehab.&demolition
  - About 370 kg/inh.

## Status:



- 2% haz. materials
- 42% for material recycling
- Special-permit landfills for “*low-Contaminated*” materials (lower than limits for hazardous waste but not allowed to backfill)
- Stavanger-area has good capacity of sorting- and recycling plants for CDW
- Demand for recycled products from concrete, asphalt, soil
- Well-working national regulations on CDW
- Few cases of illegal dumping
- *Contaminated soil*





# How to boost performance:



## National Regulations on technical requirements for construction works

- In charge: Department of Building permits and Cultural heritage management.
- Section 9-6: waste management plans: Shall be prepared for: a) projects exceeding 300 m<sup>2</sup> b) modifications/rehabilitations affecting more than 100 m<sup>2</sup> c) demolition work exceeding 100 m<sup>2</sup> d) work and installations generating more than 10 tonnes of CDW. Standard fill-in [form](#). To contain types of waste, amount and treatment-plants, planned and (later) results.
- Section 9-7: surveys of hazardous waste: projects on existing constructions require a survey of hazardous waste. Standard fill-in [form](#)
- Plan and forms to be made and present with appliance for start-up permit
- Section 9-8: waste separation: A minimum of 60 weight-% of total waste to be separated at site
- Section 9-3: soil contamination: carry out survey to find out if any soil contamination
- Plans with actual results must be attached with appliance for completed project
- Supervision can be made by municipality at construction site



CITY OF STAVANGER



# Thank you!

## Contacts

Tor Martin Larsen  
Department of Waste Management, Stavanger  
[tor.larsen@stavanger.kommune.no](mailto:tor.larsen@stavanger.kommune.no)

For more info about the project visit the COLLECTORS website at [www.collectors2020.eu](http://www.collectors2020.eu)